

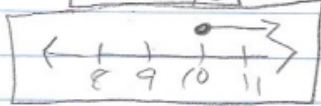
Problem Set Solutions:

G6-M4-L33/34

① $x + 8 \geq 18$

$$\begin{array}{r} -8 \quad | \quad -8 \\ \hline \end{array}$$

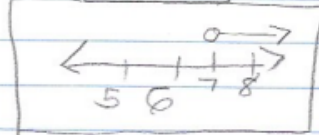
$$x \geq 10$$



② $x - 1 > 6$

$$\begin{array}{r} +1 \quad | \quad +1 \\ \hline \end{array}$$

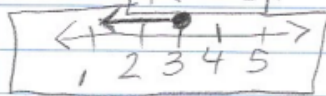
$$x > 7$$



③ $12 + k \leq 15$

$$\begin{array}{r} -12 \quad | \quad -12 \\ \hline \end{array}$$

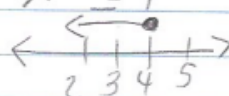
$$k \leq 3$$



④ $x - 1 \leq 3$

$$\begin{array}{r} +1 \quad | \quad +1 \\ \hline \end{array}$$

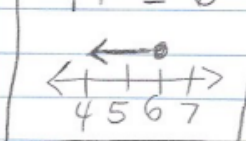
$$x \leq 4$$



⑤ $n - 2 \leq 4$

$$\begin{array}{r} +2 \quad | \quad +2 \\ \hline \end{array}$$

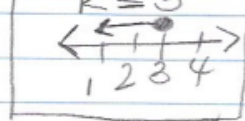
$$n \leq 6$$



⑥ $5k \leq 15$

$$\begin{array}{r} \frac{5}{5} \quad | \quad \frac{15}{5} \\ \hline \end{array}$$

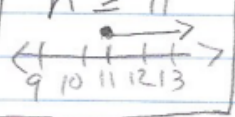
$$k \leq 3$$



⑦ $n \geq 12$

$$\begin{array}{r} 11 \quad | \quad 11 \\ \hline \end{array}$$

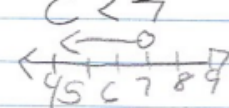
$$n \geq 11$$



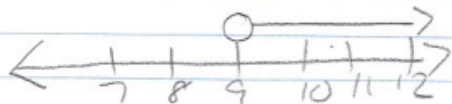
⑧ $7c < 49$

$$\begin{array}{r} \frac{7}{7} \quad | \quad \frac{49}{7} \\ \hline \end{array}$$

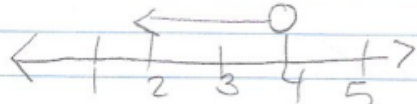
$$c < 7$$



⑨ $m > 9$



⑩ $b < 4$



⑪ $x \geq 5$

⑫ $x < 11$